

META-aivi

Wearable AI Solutions



SOLOMON



Empower frontline workers with Wearable AI Solutions

The recovery of global markets is presenting companies with new and exciting opportunities, but also, with new challenges. With 54% of businesses worldwide reporting a talent shortage in 2021, organizations are struggling to meet demand without sacrificing quality.

Solomon's META-aivi offers a flexible solution that helps companies increase their operational efficiency, reduce frontline errors and time spent on every task by combining the benefits of human dexterity and intelligent machine vision.

META-aivi is an affordable and easy-to-implement solution that bridges the gap between skilled and unskilled workers. Through a powerful AR wearable device, your operators can upskill, troubleshoot different workstations, and execute day-to-day tasks with newfound ease and efficiency.

Using deep learning technology, Solomon META-aivi glasses can help you optimize a wide range of operational processes.



Validation

Confirm your staff properly follows the operational guidelines.

- Machine setting
- Cable wiring



Counting

Perform instant machine recognition for accurate and fast counting.

- Parts inventory audit
- Kitting for assembly



Identification / Classification

Assure items are correctly placed and organized.

- Content checking before shipment
- Simple retail checkout
- Fruit categorization



Inspection

Identify defects on objects that are difficult to inspect using a fully automated line.

- Low-volume high-mix production
- Multi-sided objects applications



Optical Character Recognition

Save time when identifying and recording characters.

- Meter reading
- Part number identification
- Misprinted labels



Validation



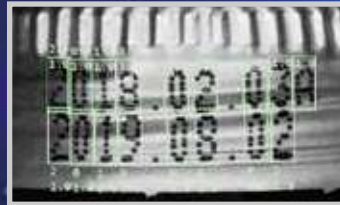
Counting



Identification / Classification



Inspection



Optical Character Recognition



Benefits

- Reduced human error
- Increased frontline throughput
- Lower cost and risk than factory automation
- Easy to implement
- Reliable machine vision combined with human dexterity
- Suitable for skilled and unskilled workers
- Accelerated new staff training

Key Features

- Easy-to-use AI annotation tools
- Only few image samples required
- Livestream video or snapshots image recognition
- Fast recognition results
- Command through voice recognition



Visit our product page

Industries



Logistics



Manufacturing



Healthcare



Welding



Metal Work



Consumer Goods



Panel Building



Automotive

Hardware Requirements

Type of H/W Support	2D AR Glasses (RealWear HMT-1/Navigator 500)
Inferencing IPC	OS: Ubuntu 20.04.3 LTS (Desktop Version) CPU: Min. Intel Core i5 / Recommended: Intel Core i7 GPU: Min. NVIDIA GeForce RTX 3070 (RAM: 8GB) RAM: Min. 16 GB / Recommended: 32 GB
Training IPC	OS: Windows 10 (64 bit) CPU: Min. Intel Core i5 / Recommended: Intel Core i7 GPU: Min. NVIDIA GeForce RTX 3070 (RAM: 8GB) / Recommended: NVIDIA GeForce RTX 3080 Ti RAM: Min. 16 GB / Recommended: 32 GB
Wireless connection supported	4G LTE, 5G, WiFi 6

AR Glasses Specifications

RealWear	RealWear HMT-1	RealWear NAVIGATOR 500
Camera	16 MP, 1080p60 video	48 MP, 1080p60 video
Audio	4 built-in microphones	
Supported Languages	English, Chinese, Spanish, Italian, German, Japanese, Portuguese, Russian, Korean, Thai, Polish, French	

Taiwan (HQ)
No. 42, Sing Zhong Rd., Nei Hu Dist., Taipei 11494, Taiwan
Tel : +886 2 8791 8989

USA
727 Brea Canyon Rd, Unit 15, Walnut CA 91789
Tel : +1 626 388 4061

Shanghai
Room 1A, Block 2, Hongqiao Headquarters No.1, No. 100 Zixiu Road,
Minhang District, Shanghai
Tel : +86 21 5956 8315

Shenzhen
1604, Block C, 2001 Shennan Avenue, Futian District, Shenzhen
Tel : + 86 755 8209 6916

✉ inquiry@solomon-3D.com  <https://www.solomon-3D.com>



AccuPick

reddot winner 2020
best of the best interface design

