

SOLOMON

Vision with Intelligence

VisionSystems
DESIGN
2019 **Innovators
Awards**

GOLD



AccuPick

reddot winner 2020
best of the best interface design



AccuPick 2D

Smart Manufacturing
Smart Logistics



Robot vision for the factory of tomorrow



AccuPick 2D significantly enhances the scope of robot applications with an intelligent AI based vision system. AccuPick 2D not only gives robots “eyes” that allow them to see, but also provides them with a “brain” to understand with human-like cognition.

Compared to conventional rule-based vision guided robot systems, AccuPick 2D offers the following advantages.

- ✓ Recognizes complex objects and patterns **using advanced machine learning**
- ✓ Identifies and locates objects **without time-consuming optical system set-up**
- ✓ Works seamlessly with **more than 20 robot brands and major PLCs**
- ✓ **Friendly GUI** to easily build and change workflows
- ✓ **Generates high return on investment (ROI)**
- ✓ **Easily Upgraded** to our award-winning AccuPick 3D

Superior detection capabilities

Unlike rule-based vision systems that often require optimal ambient lighting, which can be expensive and time consuming to attain, AccuPick 2D works perfectly under unfavorable circumstances, such as subpar lighting conditions or with poor quality images. AccuPick 2D can easily see and locate objects that have been traditionally challenging to work with, including dark, highly reflective, and transparent items. AccuPick 2D supports any GenIcam compatible with a PC-based 2D camera.

A "BRAIN" to enhance the productivity of your robots

Based on state-of-the-art neural networks, AccuPick 2D is capable of recognizing complex objects and patterns with high accuracy. The amount of time required to set up an application has been significantly reduced, getting AccuPick to "learn" about an object is as simple as labeling it once, no complicated programming or fine tuning of parameters are required. AccuPick 2D's applications include:



Densely Packed Objects



Overlapping Thin Objects



Objects of Varying -
Colors or Features or Shapes



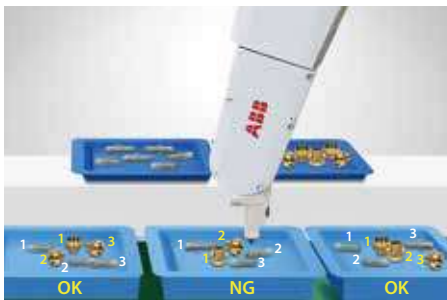
OCR



Transparent / Translucent /
Highly Reflective Objects



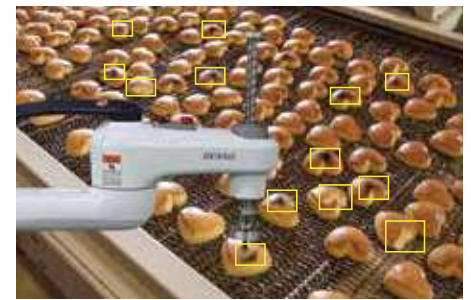
Object Varying Poses / Sides



Product Counting



Picking Unknown Items



Defect Detection and Sorting



Drag-and-drop user interface to build robot applications

AccuPick 2D offers the possibility to give direct commands to robots. Setting them up for different vision applications and workflows does not require intimate knowledge of robot programming. All workflows can be built and changed using a drag-and drop GUI.

Support of more than 20 robot brands in AccuPick 2D

Like AccuPick 3D, AccuPick 2D supports seamless connectivity with more than twenty robot brands and allows direct communications with many major PLC brands.

Users can easily upgrade to our award-winning AccuPick 3D Random Bin Picking system. AccuPick 2D and AccuPick 3D software provide a similar user interface, minimizing the amount of time required getting familiar with our 3D vision system.





AccuPick

reddot winner 2020
best of the best interface design



SOLOMON Technology Corporation

Taiwan (HQ)

No. 42, Sing Zhong Rd., Nei Hu Dist., Taipei 11494, Taiwan
Tel : +886 2 8791 8989

USA

234 S 5th Avenue, City of Industry, CA 91746
Tel : +1 626 764 4846

28221 Beck Road, Suit A13, Wixom, Michigan 48393.
Tel : +1 626 388 4061

China

1F-A, Building 2, No. 100, Zixiu Road, Minhang District, Shanghai, China
Tel : +86 21 5956 8315

Contact Us

✉ inquiry@solomon-3D.com

🌐 <https://www.solomon-3D.com>

Software Requirements: Windows 10 x64
(RAM: minimum 16GB, 32GB recommended)

Hardware Requirements: GPU: NVIDIA GTX 1070 or higher
(≥8GB VRAM recommended)

